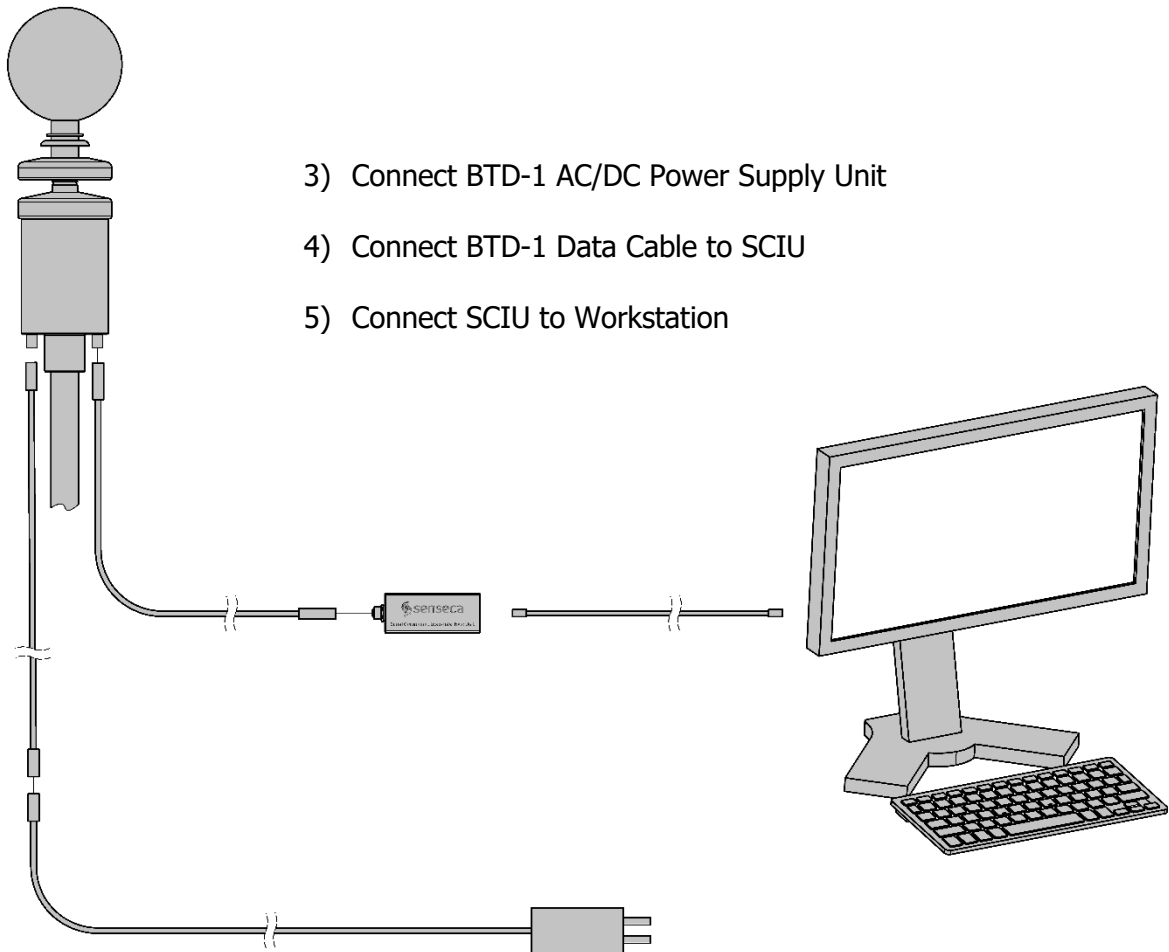
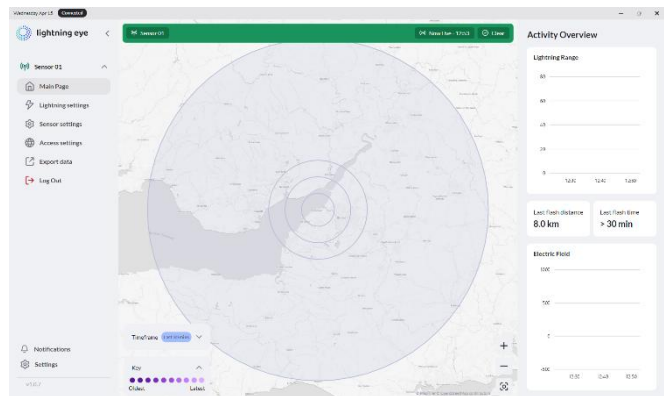


BTD-1 Connectivity Kit Quickstart Guide



- 3) Connect BTD-1 AC/DC Power Supply Unit
- 4) Connect BTD-1 Data Cable to SCIU
- 5) Connect SCIU to Workstation

- 1) Install Lightning Eye Server
- 2) Install Lightning Eye Client



Further configuration can be made using the BTD-1 User Manual/Lightning Eye User Manual.