

IMS RWIS

Road/Runway Weather Information System

solutions for the real world



List of References *Biral sensors*

List of commissioned RWIS - MicroStep-MIS

1. Road Weather System - Visibility Monitoring and Forecasting for Traffic Safety, Dubai, Dubai Emirate - United Arab Emirate
2. Traffic Information System for Roads - Automatic Road Weather Stations, Lithuania

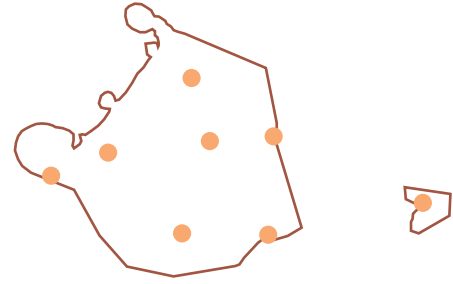


Road Weather System - Visibility Monitoring and Forecasting for Traffic Safety, Dubai

United Arab Emirate - Dubai Emirate

Contractor:

Dubai Municipality
P.O. Box 67
Dubai
United Arab Emirates



Description:

Establishment of 8 new Automatic Road Weather Stations and integration of 5 existing weather stations. Power supply from solar panels.

Location of New Automatic Road Weather Stations:

Jebel Ali Ind
Al Warqaa First
Aleyas
Um Al Moameneen
Nazwa
Al Layan
Al Faqaa
Hatta



Meteorological sensors:

Automatic Weather Station AMS 111 with full set of sensors:

- 8 x Ultrasonic Wind Speed and Direction Sensor
- 8 x Temperature and Humidity Probe
- 8 x Air Pressure Sensor
- **8 x Visibility and Present Weather Sensor - Biral SWS100**
- 24 x Soil Temperature Sensor
- 24 x Theta Probe (soil moisture)
- 8 x IP Camera

Data network

Communication network used for this project are GPRS/GSM.

Commissioning:

2009

Road Weather System - Visibility Monitoring and Forecasting for Traffic Safety, Dubai

United Arab Emirate - Dubai Emirate

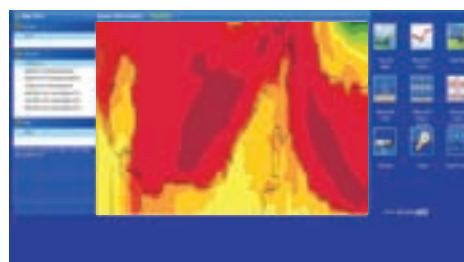
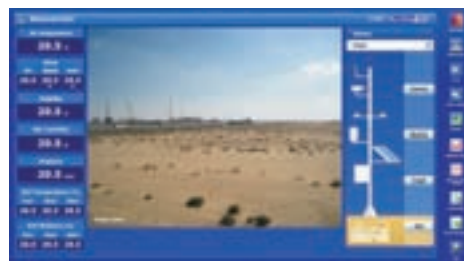
Central Forecasting System:

UDCS

CLDB

Modelling:

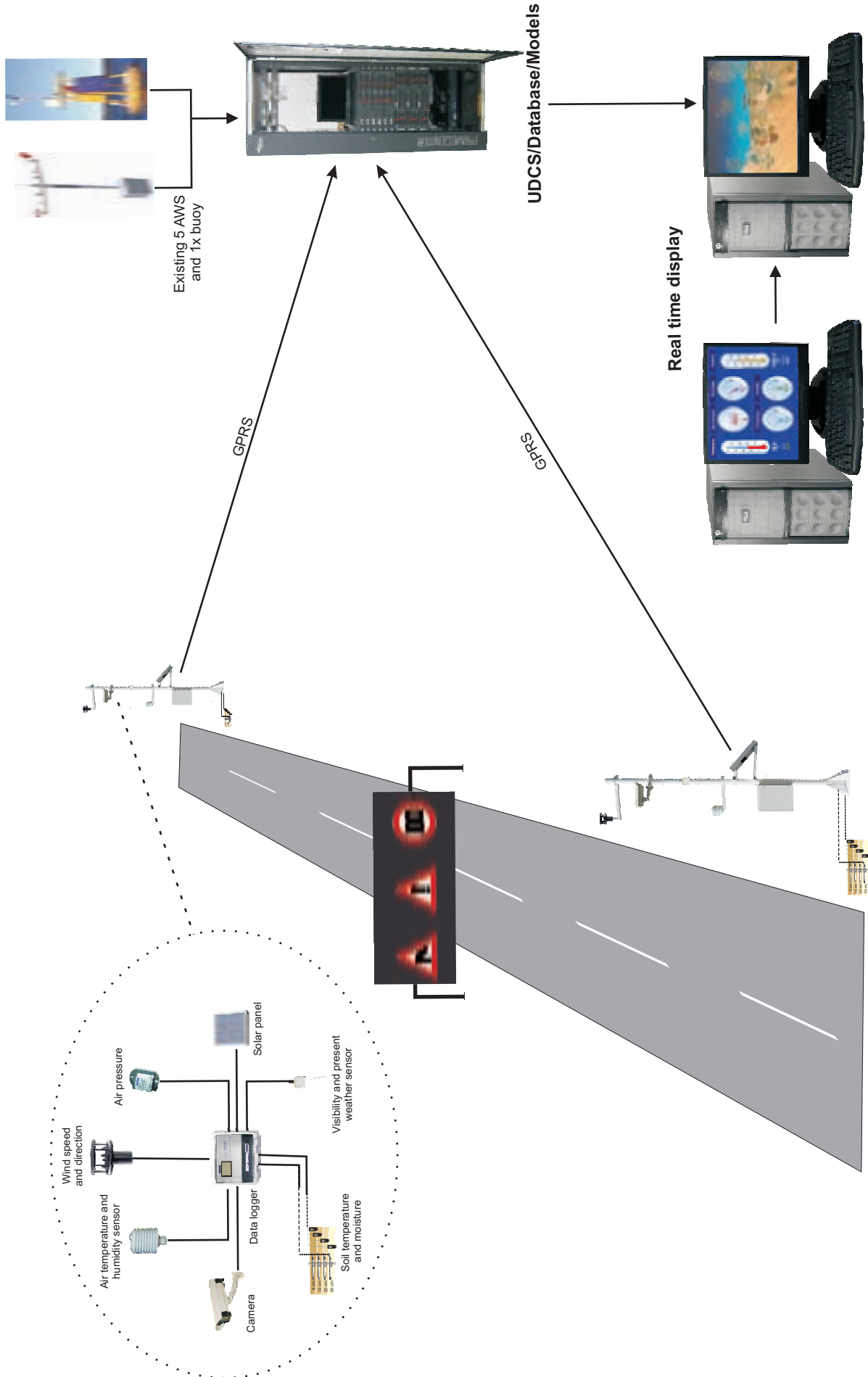
- Download of initial and boundary conditions from global model.
- Local forecast by non-hydrostatic 3D model
- Utilization of measured data from stations
- 1D forecast of fog model



Road Weather System - Visibility Monitoring and Forecasting for Traffic Safety, Dubai

United Arab Emirate - Dubai Emirate

solutions for the real world



Traffic Information System for Roads - Automatic Road Weather Stations, Lithuania

Lithuania

Contractor:

Lithuanian Road Administration
Under the Ministry of Transport and Communications
of the Republic of Lithuania,
J.Basanavičiaus g.36/2,
LT-03109 Vilnius
LITHUANIA



Local partner:

FIMA Ltd.
Zirmunu str. 139
Vilnius, LT 09120
LITHUANIA

43 Automatic Road Weather Stations - national network

Road and Meteorological sensors:

43 x Automatic Weather Station AMS 111

- 43x Remote Road Surface State sensor
- 43x Remote Road Temperature Road sensor
- 43x Wind Speed sensor
- 43x Wind Direction sensor
- **43x Visibility and Present Weather sensor - Biral HSS VPF-730**
- 43x Temperature sensor
- 43x Air Temperature and Relative Humidity sensor

